

# RPV Sanitary Vent Valve



The RPV sanitary vent valves are completely autoclavable, they allow for manual venting of gas. Inexpensive and easy to use, these valves in AISI 316L can be installed on distribution loops or tanks, they are available with CLAMP, butt weld or gas threaded connections.



## ADVANTAGES:

- ✓ Can be sanitized in-line
- ✓ Autoclavable
- ✓ Easy to use and reliable
- ✓ High temperature and pressure resistant
- ✓ With removable dust protective cap
- ✓ Full material traceability
- ✓ Certified materials for Pharmaceutical use

## APPLICATION:

Sanitary vent valves suitable for installation on the tanks or process lines of Pharmaceutical, Food & Beverage, Cosmetics, Dairy and Fine Chemicals plants.

<b>Size range</b>	1/2" - 3/4" - 1" - 1 1/2" - 2" - 2 1/2" - 3" - 4"
<b>Stainless steel in contact parts Material</b>	AISI 316L - 1.4404
<b>Plug Material</b>	Modified PTFE - Silicone - FKM
<b>O-ring Material</b>	Silicone - FKM - EPDM
<b>Internal surface finish</b>	Average Ra ≤ 0.76µm
<b>Working pressure rating</b>	Vacuum + 10 barg
<b>Max working temperature</b>	150°C
<b>Certifications</b>	3.1 material certificates (in contact) according to UNI EN 10204 FDA USP Class VI other certificates on request

## CONFIGURATOR



## DATASHEETS



Last updates can be found on our website - [www.aerreinox.it](http://www.aerreinox.it)  
In the interests of development of the product, we reserve the right to change the specifications without prior notice



## PROCESS CONNECTION



1/2" - 3/4" Clamp ASME BPE /BS 4825

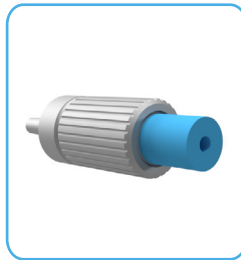
1" - 1 1/2" Clamp ASME BPE /BS 4825

2" Clamp ASME BPE/BS 4825

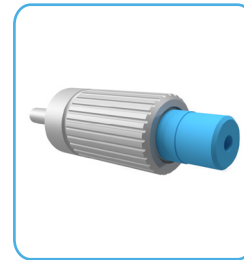
2" 1/2" Clamp ASME BPE/BS 4825

3" Clamp ASME BPE/BS 4825

4" Clamp ASME BPE/BS 4825

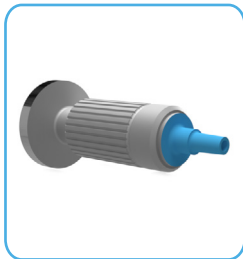


Butt Weld Ø10mm

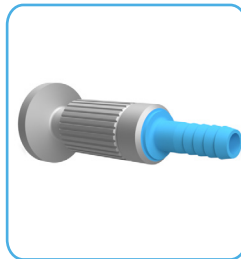


1/8" Male Gas Thread - ISO228/1

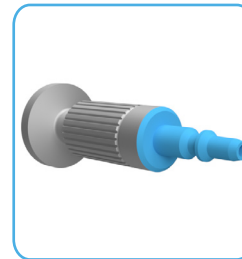
## SAMPLING OUTLET CONNECTION



Luer male



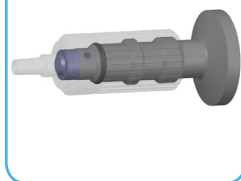
Hose Barb Ø6 x 1.75mm



Quick connection O3

## SEALS

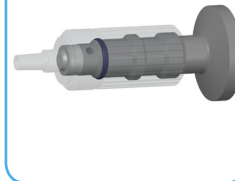
PLUG



Silicone

Modified PTFE

O-RING



Silicone

ERDM

CONFIGURATOR



DATASHEETS



Last updates can be found on our website - [www.aerreinox.it](http://www.aerreinox.it)  
 In the interests of development of the product, we reserve the right to change the specifications without prior notice



## OPTIONAL

- Electropolishing
- Other Materials
- Other types of connections
- Customizable on request

For further details about codes and download of the drawings, visit our [CONFIGURATOR](#)

### CONFIGURATOR



Last updates can be found on our website - [www.aerreinox.it](http://www.aerreinox.it)  
In the interests of development of the product, we reserve the right to change the specifications without prior notice

### DATASHEETS

